

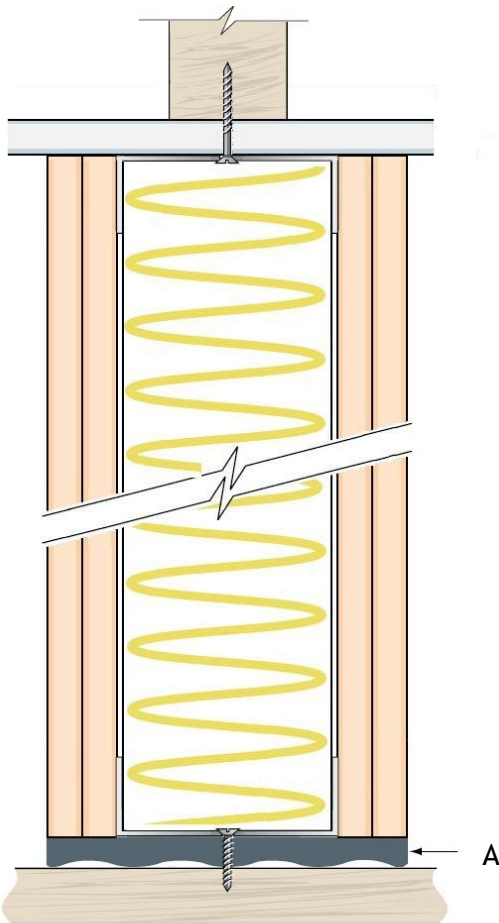
Internal Partition Isolation

Problem - Flanking sound transmitted through internal partitions

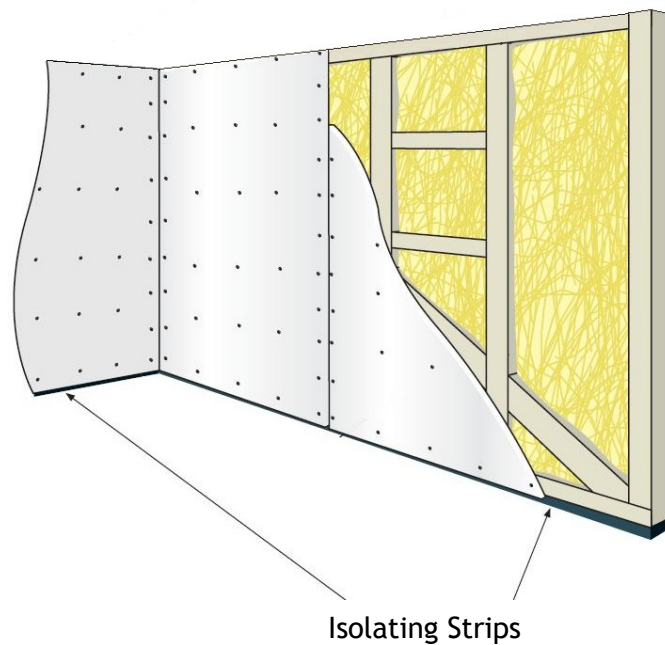
Solution - Isolate partitions with InstaCoustic Isolating Strips

- A. Isolate the full width of the partition including the plasterboard wall linings

Section Through Partition



Elevation showing position of isolating strip



Performance Improvement

Results	Separating Floor Airborne Improvement Achieved On Site
Airborne	6dB $D_nT_w + C_{tr}$

Please see case study on next page for full performance figures

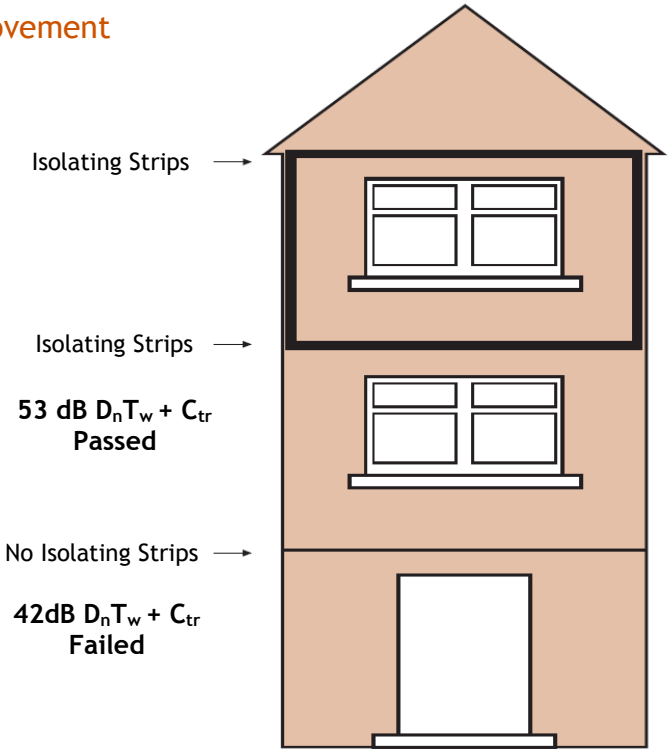
Key Issue

- Ensure that the isolation strips are wide enough to isolate the framework of the partition and the wall linings

Internal Partition Isolation

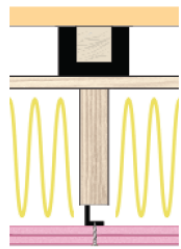
Isolating strips fitted to all external and internal partitions

11dB Improvement



Please note - 3dB improvement represents a doubling of sound insulation

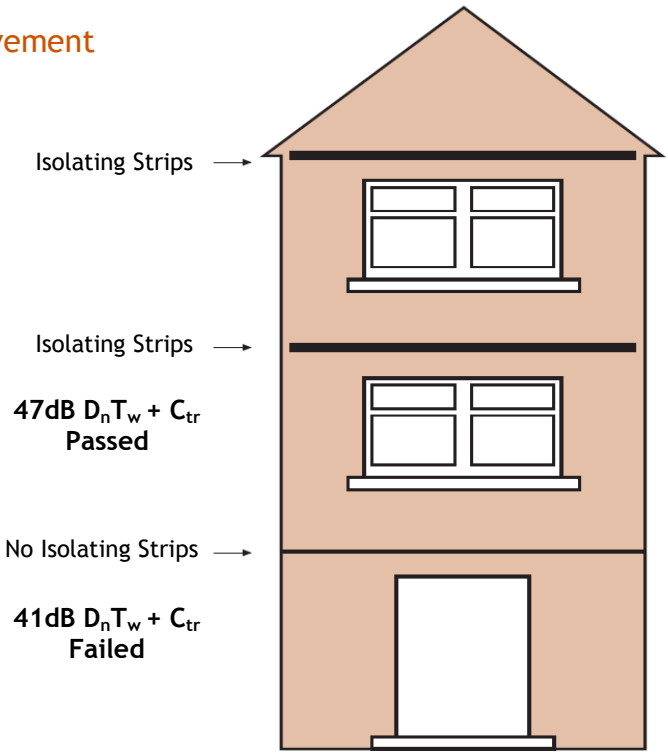
Acoustic separating floor



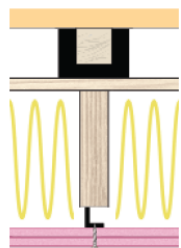
- C40 Acoustic floor
- OSB Structural board
- 50mm x 225mm Timber joists
- 100mm Insulation
- Resilient bars
- 2 x 12.5mm Fireline board

Isolating strips fitted to all internal partitions

6dB Improvement



Acoustic separating floor



- C40 Acoustic floor
- OSB Structural board
- 50mm x 225mm Timber joists
- 100mm Insulation
- Resilient bars
- 2 x 12.5mm Fireline board