

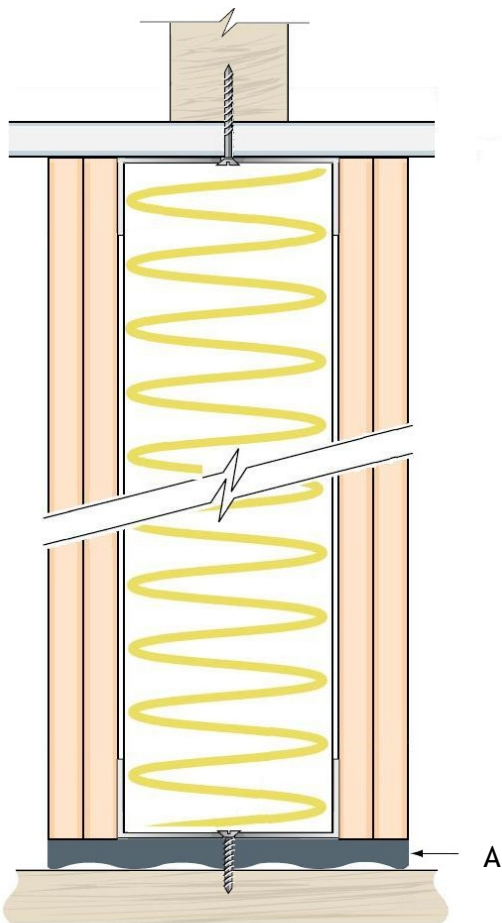
Internal Partition Isolation

Problem - Flanking sound transmitted through internal partitions

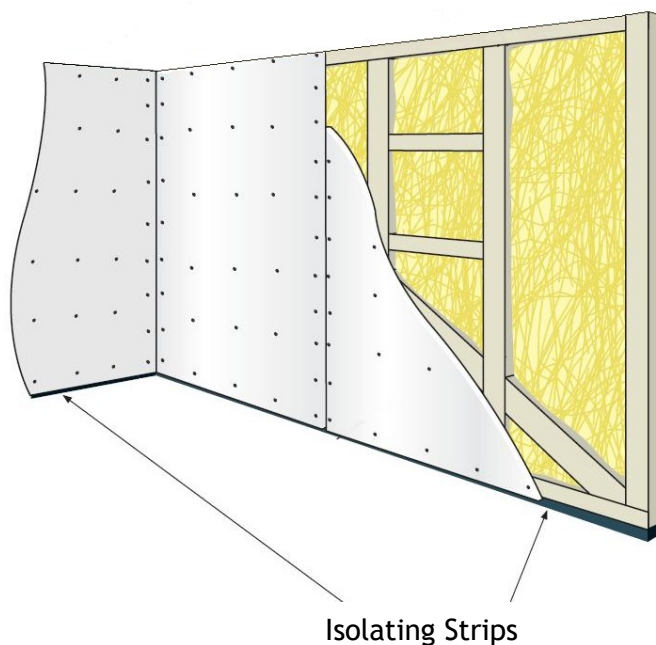
Solution - Isolate partitions with InstaCoustic Isolating Strips

- A. Isolate the full width of the partition including the plasterboard wall linings

Section Through Partition



Elevation showing position of isolating strip



Performance Improvement

Results	Separating Floor Airborne Improvement Achieved On Site
Airborne	6dB $D_nT_w + C_{tr}$

Please see case study on next page for full performance figures

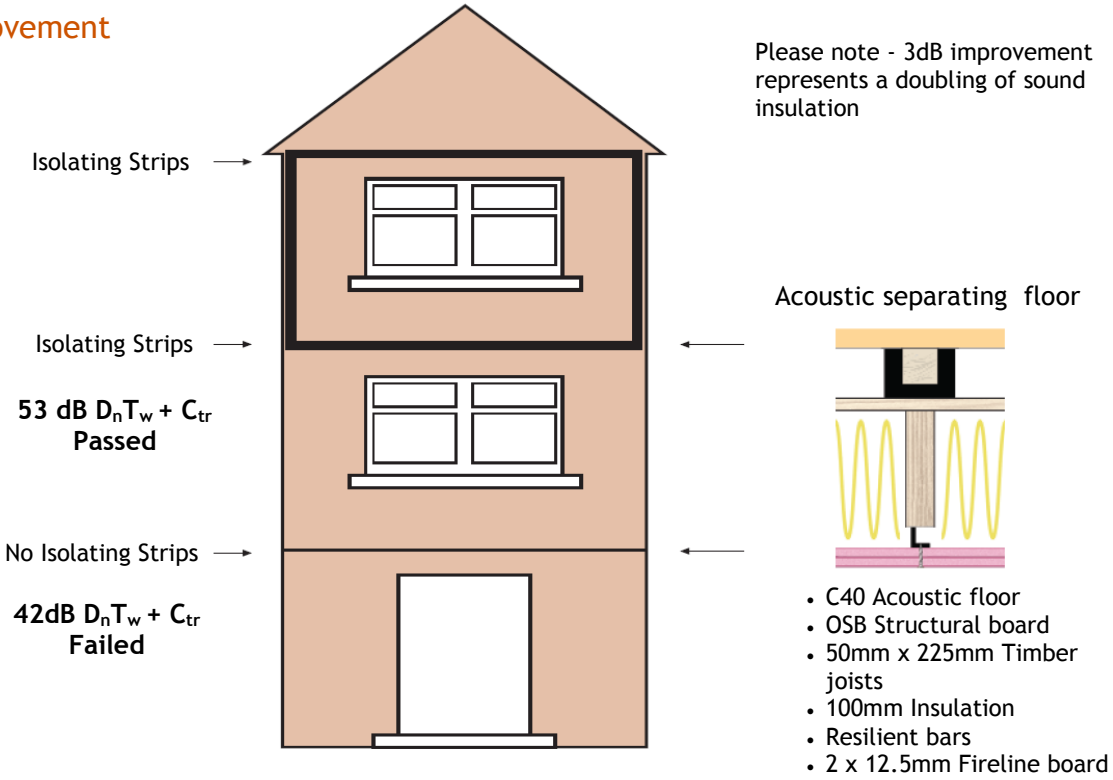
Key Issue

- Ensure that the isolation strips are wide enough to isolate the framework of the partition and the wall linings

Internal Partition Isolation

Isolating strips fitted to all external and internal partitions

11dB Improvement



Isolating strips fitted to all internal partitions

6dB Improvement

